

Intelligent Filing Limited

# file@home 3

Installation Guide

July 2011

## Contents

Getting Started.....	3
Minimum System Requirements .....	3
Installation Notes.....	3
Installing file@home .....	4
Installing Microsoft .NET 2 Framework.....	<b>Error! Bookmark not defined.</b>
Notices .....	12

## Getting Started

---

This document assumes that the reader is comfortable installing software on the Microsoft Windows operating systems, and as such contains information of a technical nature. Please contact [webmaster@myhomefiling.com](mailto:webmaster@myhomefiling.com) if you are experiencing difficulty while attempting to install *file@home*.

## Minimum System Requirements

---

The minimum system requirements for *file@home* are as follows:

<b>Processor</b>	1 gigahertz (GHz) or faster processor recommended
<b>Framework</b>	.NET Framework 4.0 (Client Profile)
<b>Operating System</b>	<ul style="list-style-type: none"> <li>Windows XP with Service Pack 2 or later</li> <li>Vista Home Basic with Service Pack 2 and above</li> <li>Windows 7 Basic and above</li> </ul>
<b>Memory</b>	1 gigabyte (GB) or more recommended
<b>Hard Disc</b>	Approximately 25 MB of available hard-disk space for the recommended installation*
<b>Drive</b>	CD-ROM or DVD-ROM drive**
<b>Display</b>	Super VGA (1,024x768) or higher-resolution video adapter and monitor
<b>Other Devices</b>	<p>Microsoft Mouse or compatible pointing device</p> <p>TWAIN compatible scanner for scanning documents</p>

\*Capacity requirement for document storage is dependent on the size of the images and the volume. Allow approximately 1.2Gb for every 20,000 documents when archiving to hard disc.

\*\* If *file@home* will backup to CD or DVD, a device capable of writing to such media is required.

## Installation Notes

---

Before attempting to install *file@home*, ensure that the target system meets or exceeds the minimum system requirements. All installations require Administrator privileges.

## Installing file@home

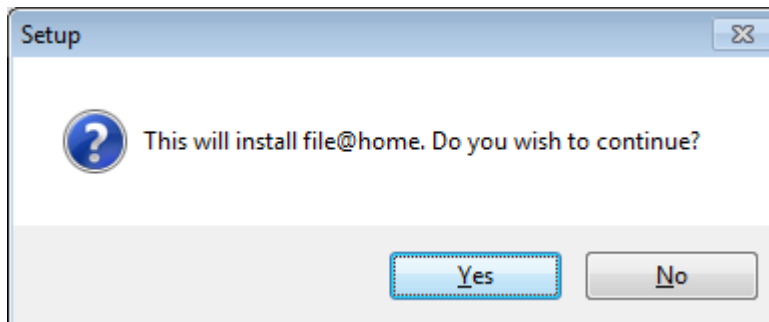
---

To install *file@home*:

1. Locate the installation file **file@home\_setup.exe**, run the executable to begin the installation

The installation file for file@home can be downloaded from:  
<http://www.myhomefiling.com/download/>

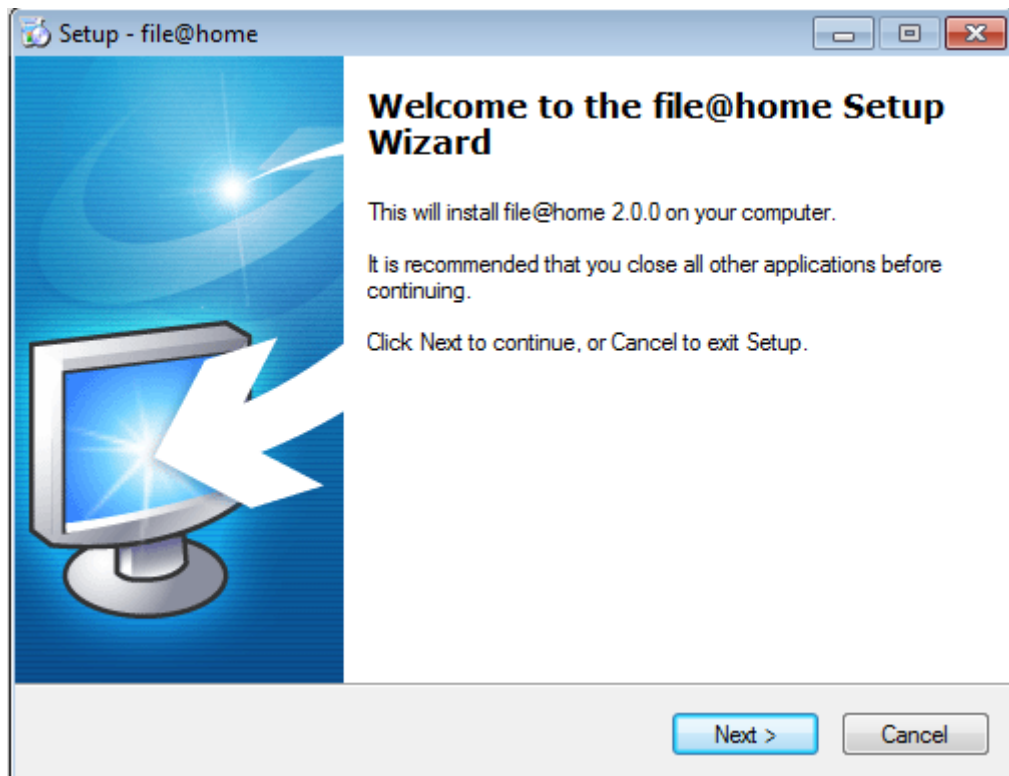
2. When you are asked would like to begin the installation, click **yes**



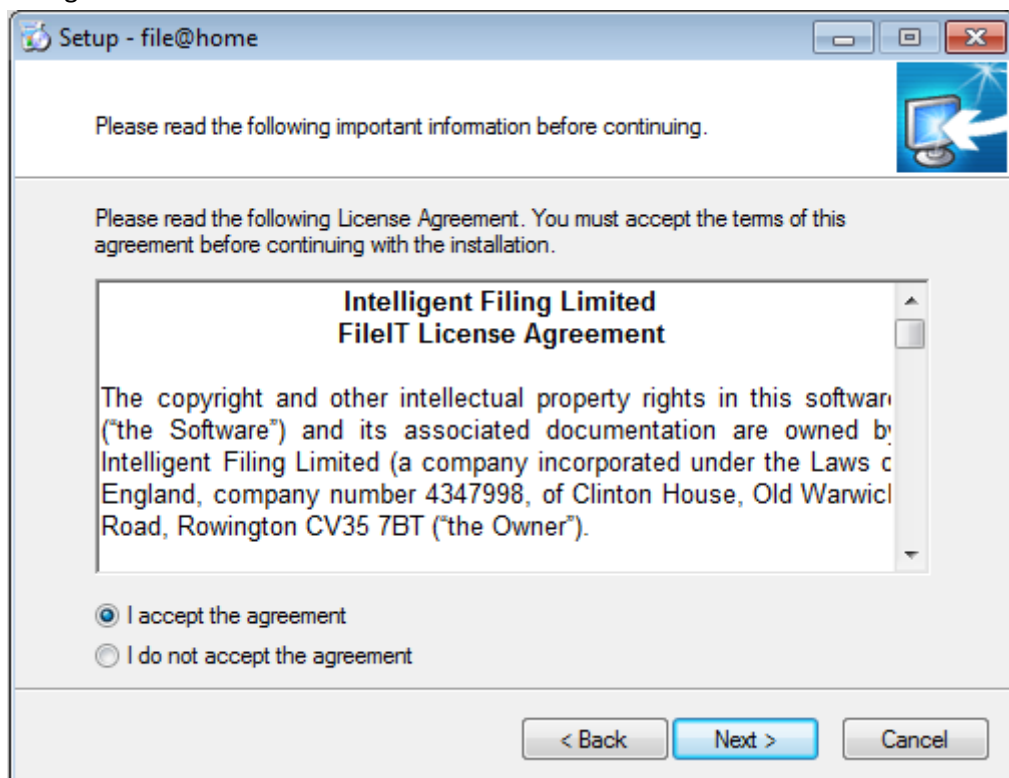
If you click Yes and the Microsoft .Net Framework 4.0 Client Profile (or higher) is not installed on your computer, you will see a message displayed on the screen and you will not be able to proceed to the next step. You can install the Microsoft .Net Framework 4.0 from either Microsoft Update or by visiting the following link

<http://www.microsoft.com/download/en/details.aspx?id=17851>

3. At the welcome screen, click **Next**

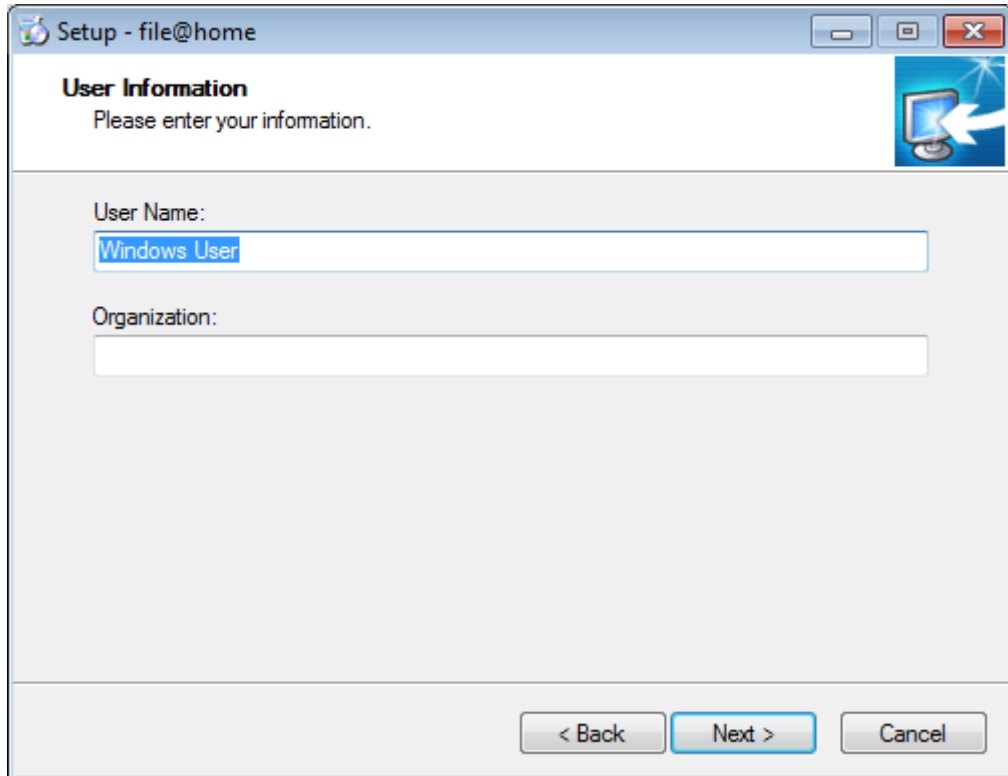


4. Please read the license carefully. If you agree with the terms set out, select "I accept the agreement" and click **Next**



If you do not accept the terms set out within the license agreement, you will be unable to continue the installation of file@home. If you have any queries regarding the content of the agreement or require clarification on any of the points set out in the agreement please contact us using any of the methods set out in the [Notices](#) section of this document.

5. When prompted for your user details, enter appropriate information for your organisation. Click **Next** to continue



Setup - file@home

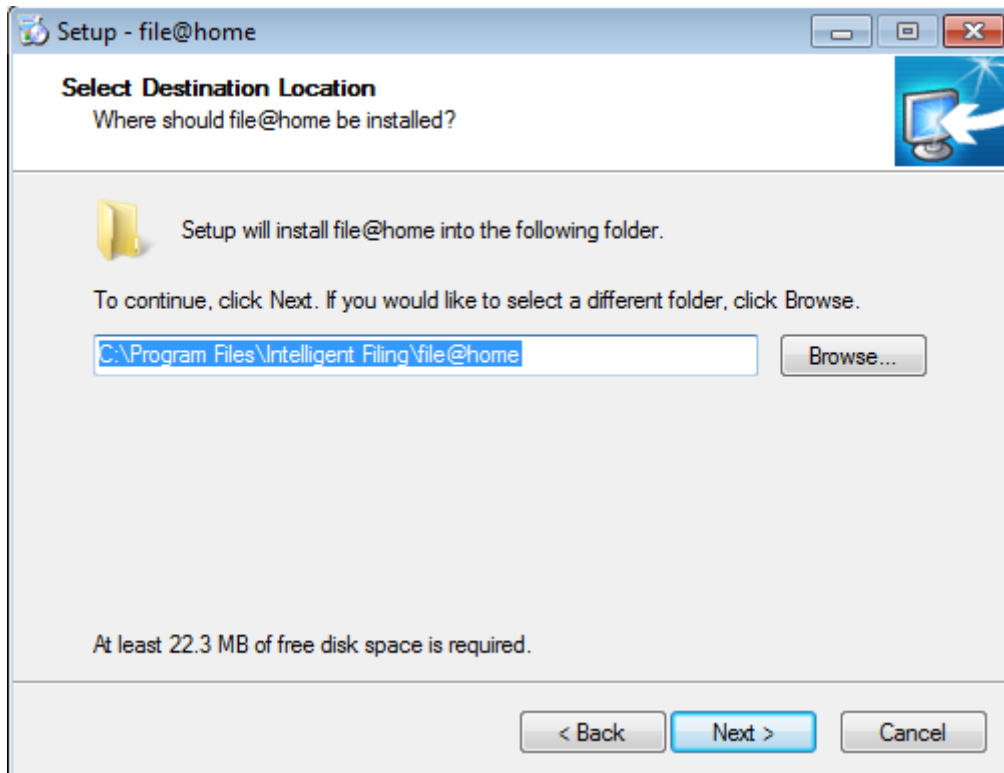
**User Information**  
Please enter your information.

User Name:

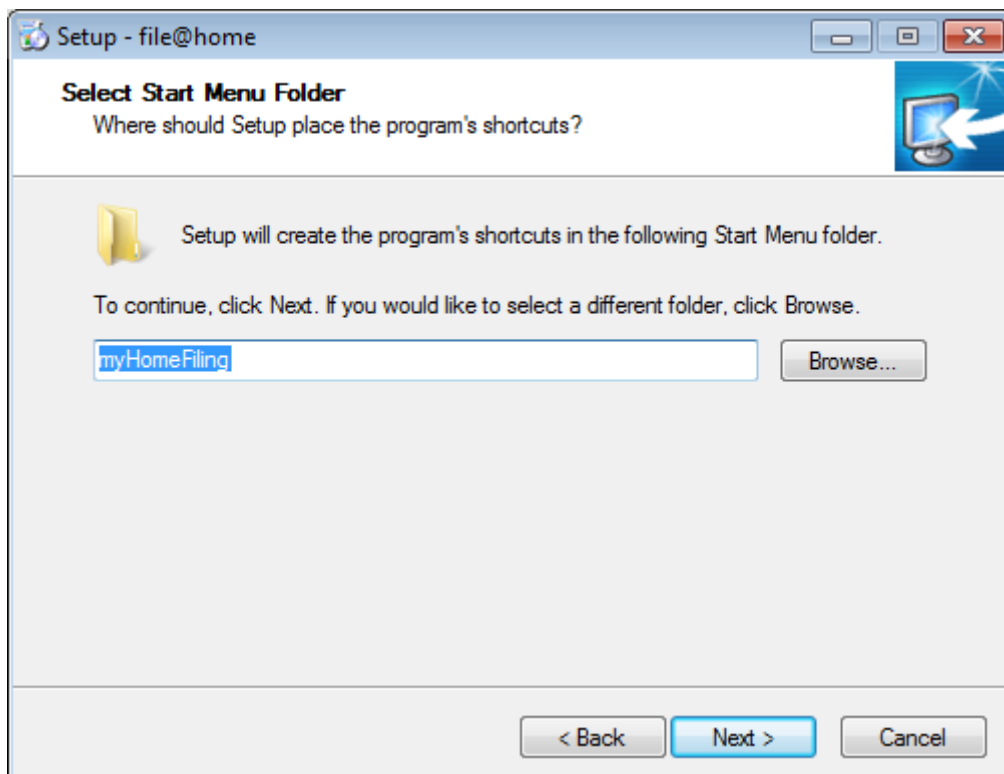
Organization:

< Back   Next >   Cancel

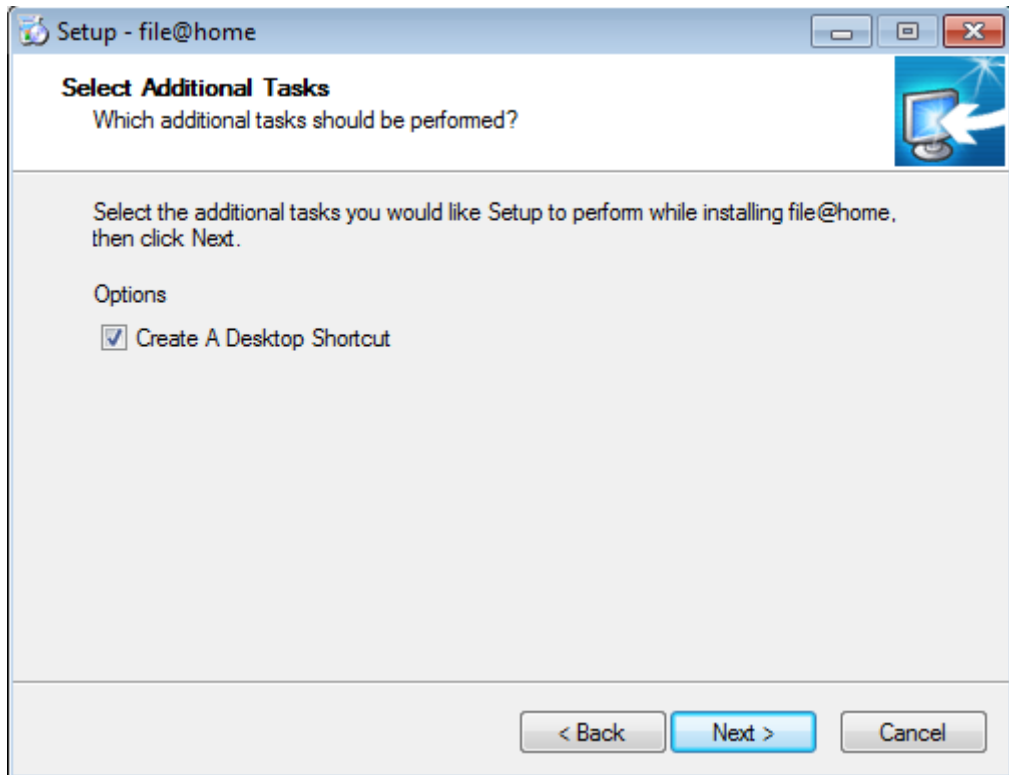
- When prompted for the destination location, select the folder where you wish to install *file@home* to and click **Next** to continue



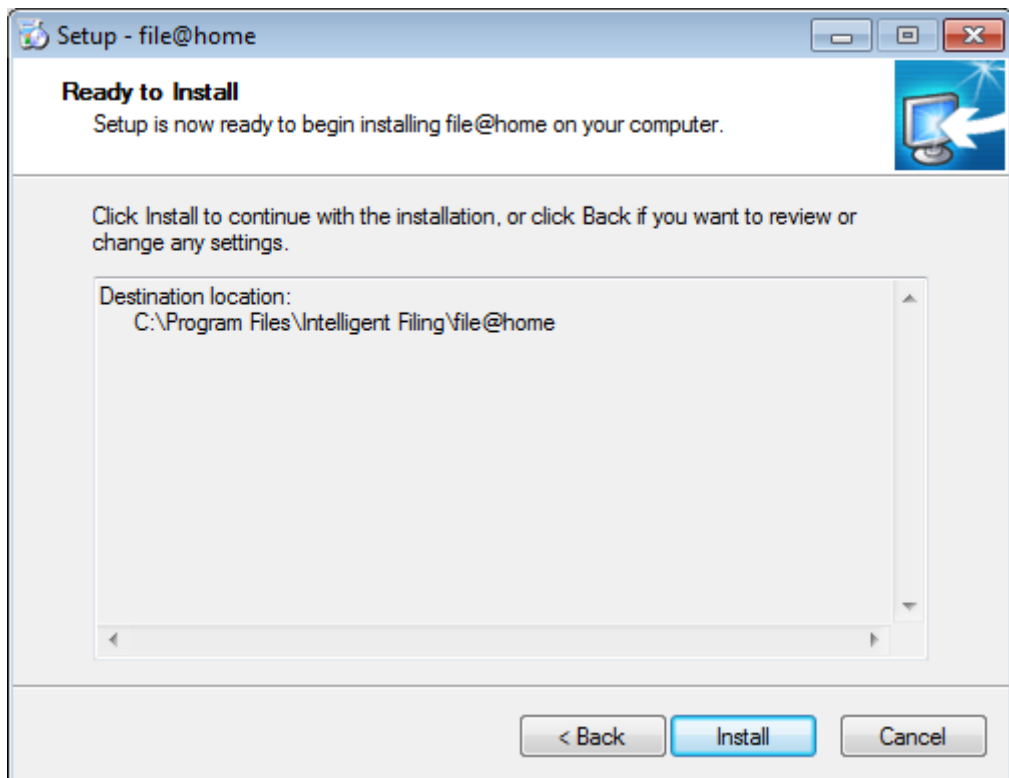
- When prompted for the location of the program's shortcut, select the required folder and click **Next** to continue



- You will be asked whether you wish to have a shortcut to *file@home* on your desktop, when you have made your decision, click **Next** to continue



- Click **Install** to proceed



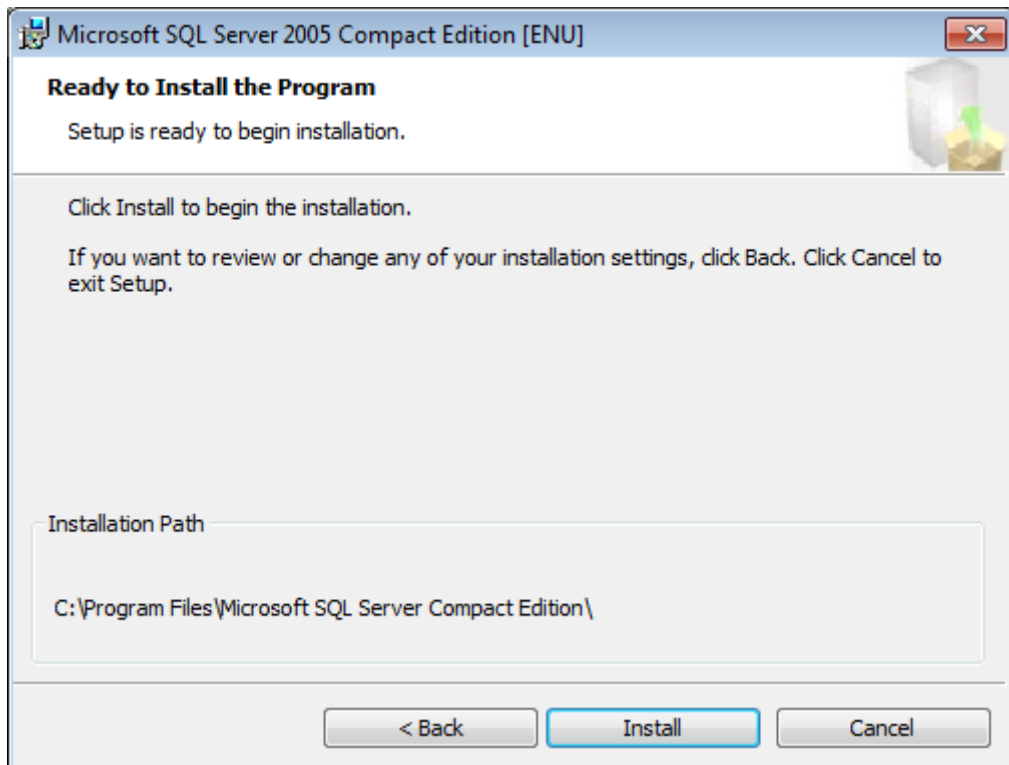
- Once the installer has finished copying files to your computer, another installation program will appear. Click Next to continue



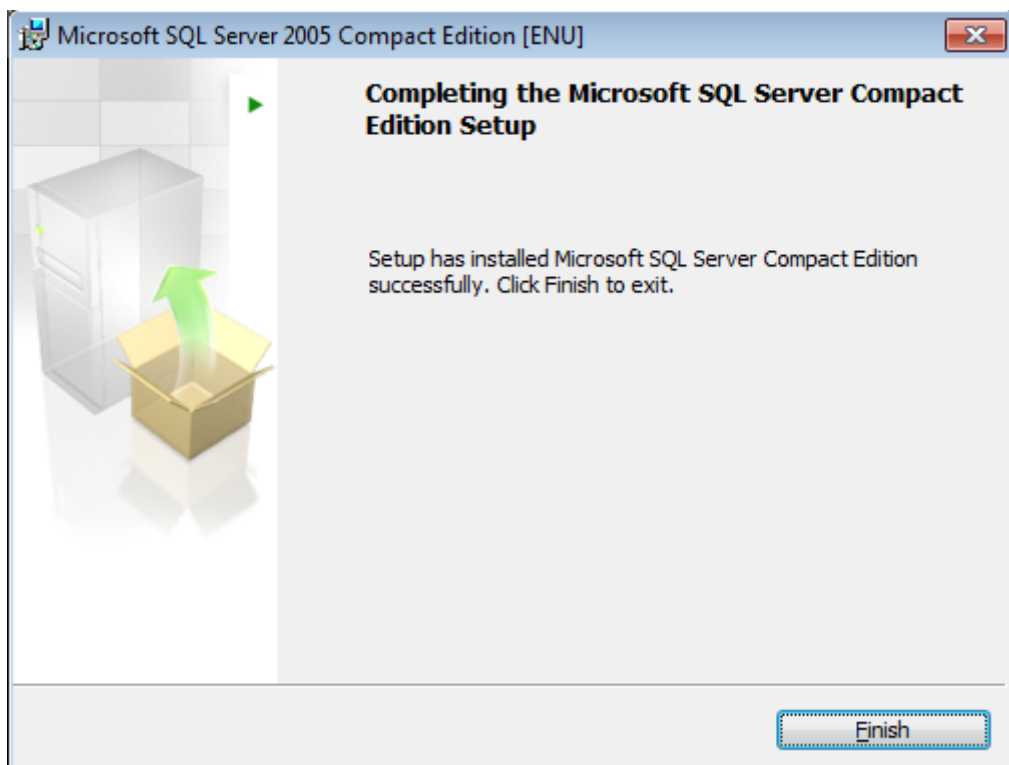
- You must agree to the license terms to proceed with the installation. You may then click Next to continue



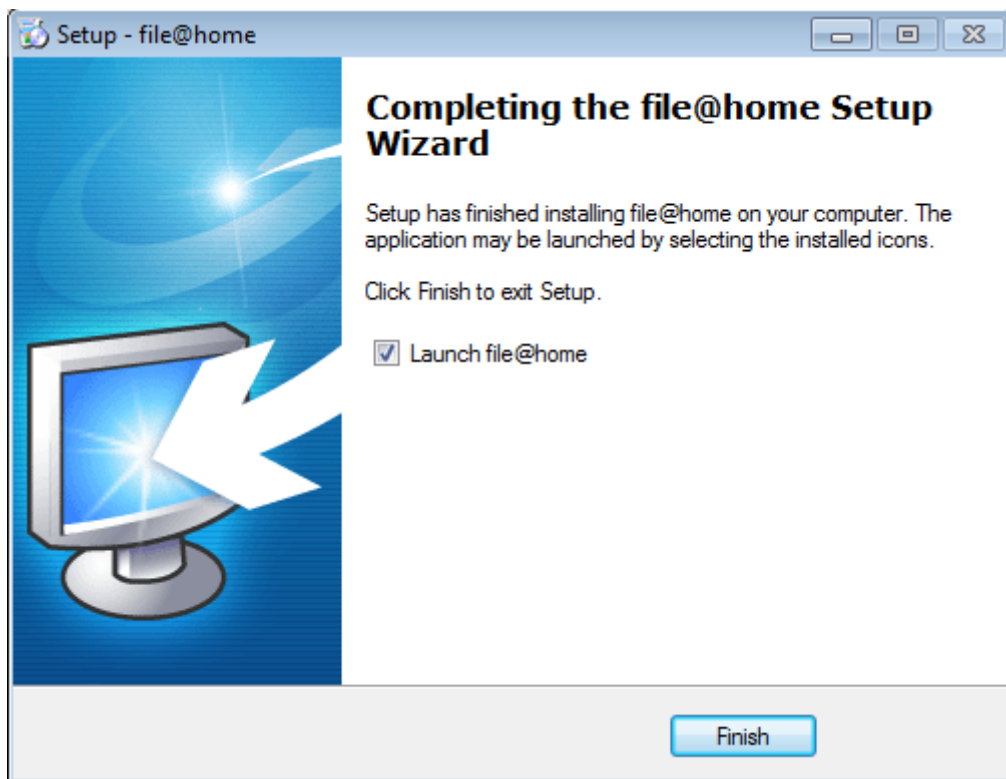
12. You will now have the option to specify where the files will be installed to. The default location is normally sufficient for all but advanced installations. Once you have selected the location, click **Next** to continue



13. When prompted, click Finish to return to the original installation program



14. You will be notified that the installation has completed, click **Finish** to close the final screen. You can optionally choose to launch *file@home* when the installation program finishes



## Notices

---

Contents of this document are copyright ©2011 Intelligent Filing Limited / myHomeFiling.com

Reproduction in part or full for use other than the installation of the software without the prior consent of Intelligent Filing Limited is expressly prohibited.

Intelligent Filing Limited can be contacted in the following ways:

1. **By Post**  
Intelligent Filing Limited  
Pembroke Centre  
Cheney Manor Estate  
Swindon  
Wiltshire  
SN2 2PQ
2. **By Email:**  
support@myhomefiling.com
3. **By Telephone:**  
+44 (0) 1793 486 668
4. **By Fax:**  
+44 (0) 1793 610 091